

Digital-in

Decoding digital resilience
for vulnerable individuals in
teh age of AI.

Friday, November 15, 2024



Digital
in SKILLS
FOR
inCLUSION



Co-funded by
the European Union

Our resilience in real life - 1/2

Do you know the seven 'Cs'?

- Competence
- Confidence
- Connection
- Character
- Contribution
- Coping
- Control

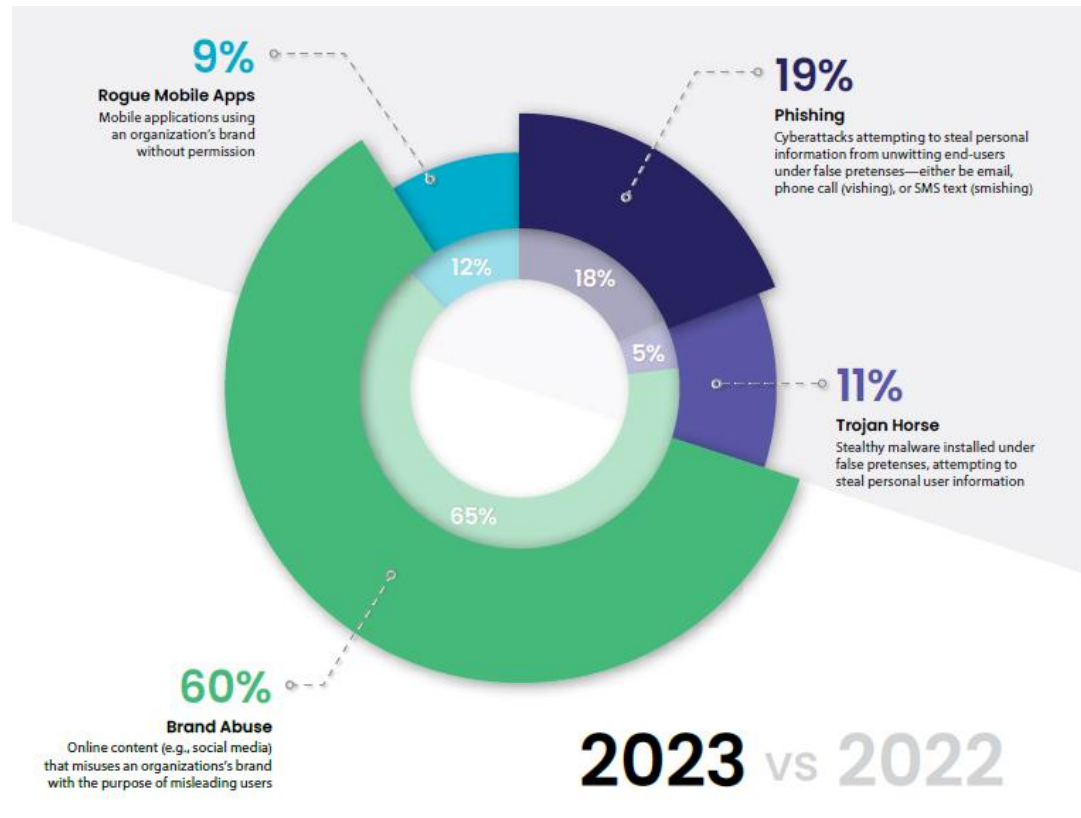


From real to digital



Take a look to data!

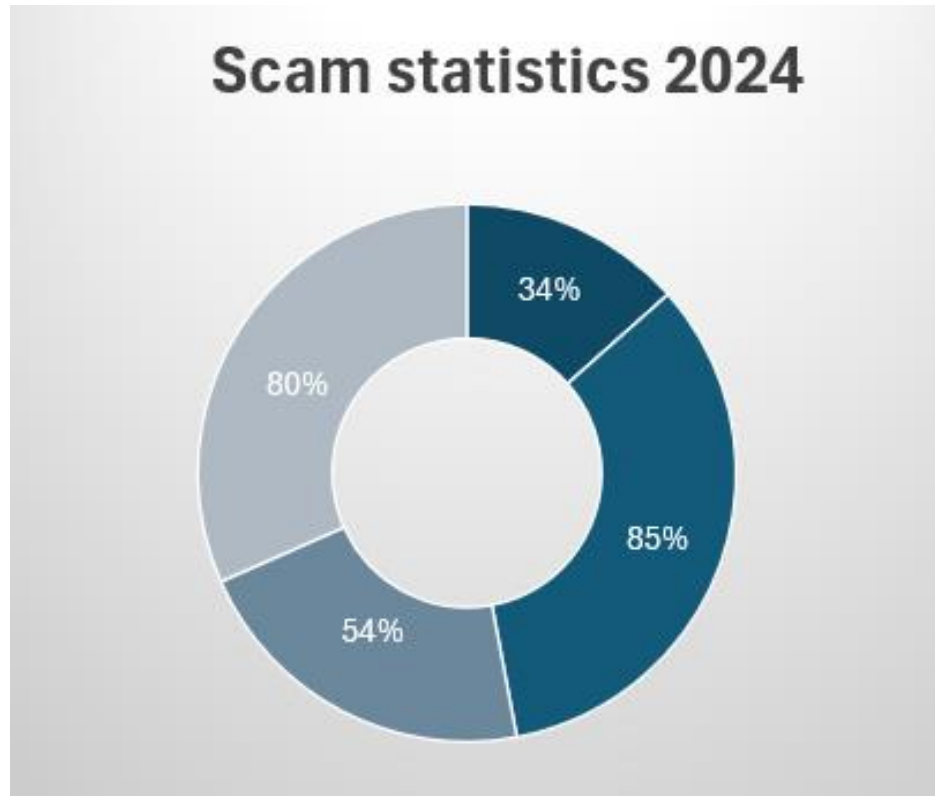
What are the most common online frauds?



Source: OUTSEER- 2024 Global Fraud & Scams Trends Report

Take a look to data!

How many are online frauds? How do people feel?



- **34%** of people have experienced cyber scams during the past 12 months
- **85%** of people received a digital scam attempt
- **54%** of cyber scams are conducted via email
- **80%** of respondents worry about their online safety

... and **5.7 in 10** people say that they don't know who to trust online

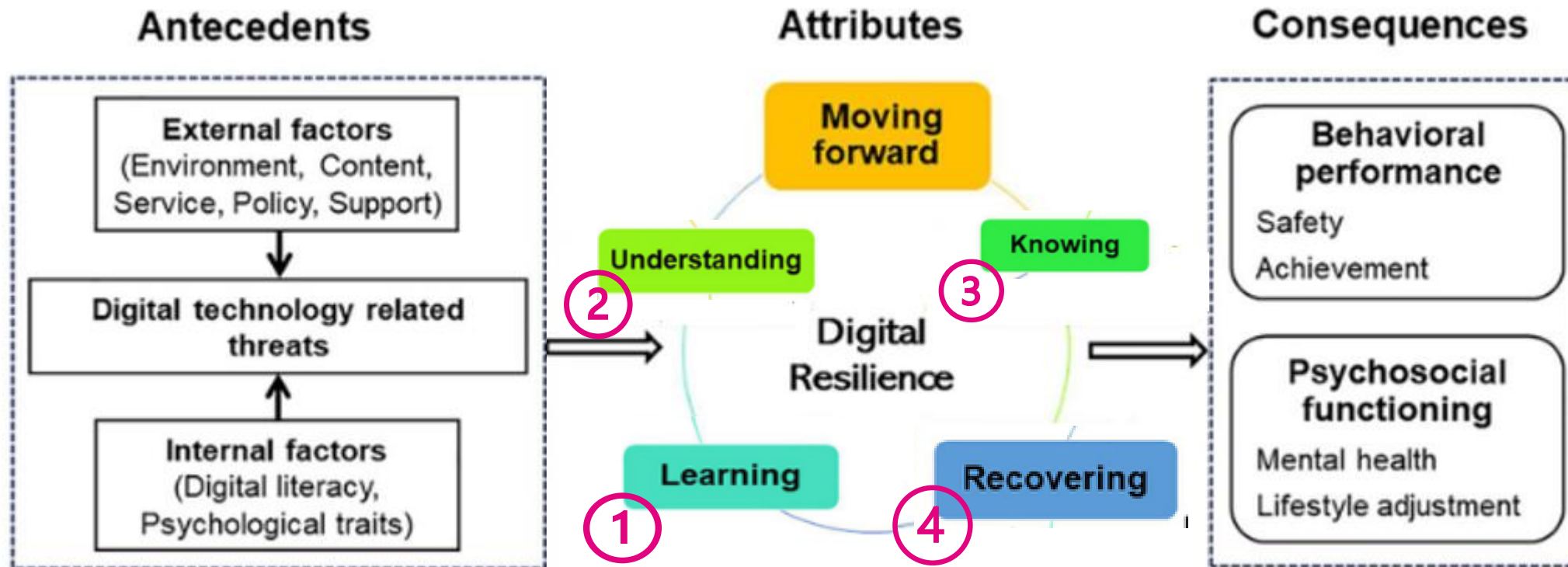
Source: <https://tinyurl.com/yfme2smz>

What digital resilience is

*a dynamic process
whereby
individuals and/or groups
learn how to
recognize, manage and recover
from online risks.*

Enable our digital resilience

How can we do it properly?



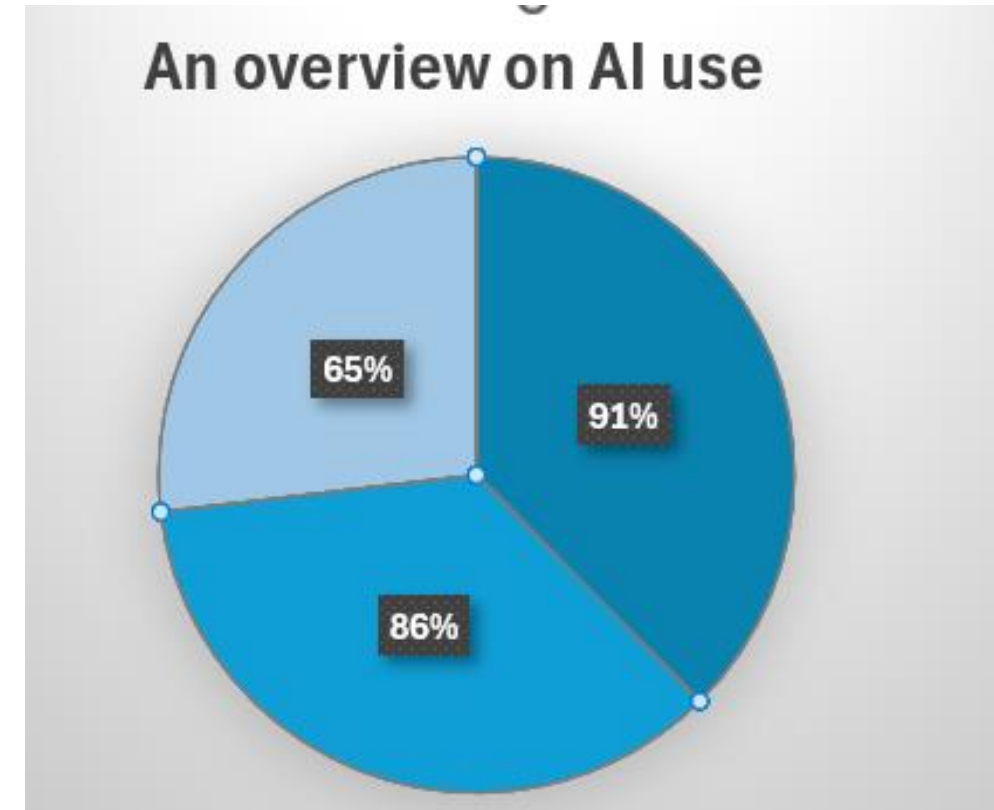
Improve our digital resilience

How can AI help us?

91% of security teams are currently using public generative AI tools

86% of Chief Information Security Officers (CISO) believe that generative AI will alleviate skills gaps and talent shortages.

65% of Security Operations Centers (SOC) teams complain about pivoting among too many disparate tools and management consoles and see in the AI use an effective solution.



Source: The AI Philosophy Powering Digital Resilience | Splunk

Improve our digital resilience

How can AI help us?

The above mentioned data tell us that **AI is critical to digital resilience** and **necessary to guarantee security** while we surf the Net, we open an email, we share contents through our smartphone and so on...

Imagine **AI as ubiquitous as electricity is in our daily life** and so well-integrated to be like switching on a light.

And remember that AI will make IT, engineering and security operations faster and easier, **improving any digital experience of ours.**

Improve our digital resilience

How can we lean on AI to enhance digital resilience, not erode it?

The most influential researchers suggest IT and security experts to design and build **AI models**, considering the best insights **derived from real-world experience and data**.

AI, to be truly useful in the context of digital resilience, it must be set up and tightly **embedded into everyday workflows**.

It's like saying that we not only need data from real life, but also a **human-in-the-loop feedback** to improve more and more responsible models, which enhances trustworthiness.

In everything concerning digital resilience, **trust is paramount**.

Thank-you.

*“you can’t protect what you don’t know,”
and there is still so much to be discovered about AI.
Here’s what we do know:
AI will be used for good and bad.
AI will improve our safety online.”*

info@digitalin.eu | www.digital-in.eu

Follow the project



Co-funded by
the European Union